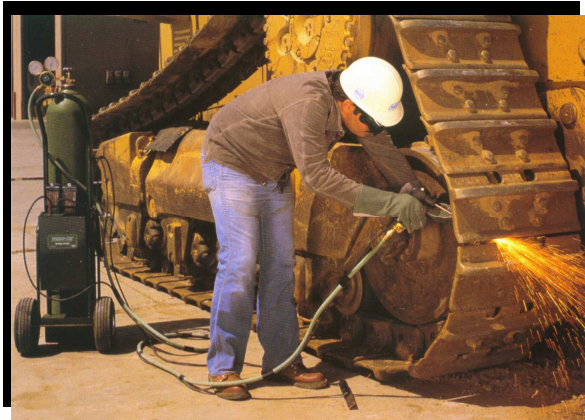


INTRODUCE

PRIME-CUT



ULTRATHERMIC CUTTING SYSTEM

The professional's
choice for
gouging, piercing
and cutting



PRIME CUT

Ultrathermic Cutting System



DESCRIPTION

Prime Cut is an ultrathermic cutting system operating at temperature exceeding 10,000°F (5538°C). Because of this very high temperature, the surface preheating, often long and exhausting, is not required. Additionally, surface grinding and gouge cleaning are not required because *Prime Cut* does not leave any carbon deposits.

Because of the unique burning action of *Prime Cut's* proprietary ultrathermics rods literally liquefy any material in their path, using material itself as fuel. They will quickly cut, pierce or gouge almost any known material including **cast iron, stainless steel, alloy or mild steel, concrete, granite, nickel, titanium and aluminum.**

Prime Cut ultrathermic cutting system is safer than other types of cutting equipment because they do not require high amperage or potentially dangerous acetylene (or any other secondary fuel). Operator comfort and safety are also improved, because *Prime Cut* produces less noise, smoke and noxious gases than other systems. The 6, 12 or 24 volt DC ignition system, single oxygen fuel source with one regulator and completely self-contained portable kit assures that a *Prime Cut* system is easy to operate...even for the first time user.

The *Prime Cut* kit is compact enough to be stored in a tool rack or to bring in a truck or a car at the workplace. The kit includes :

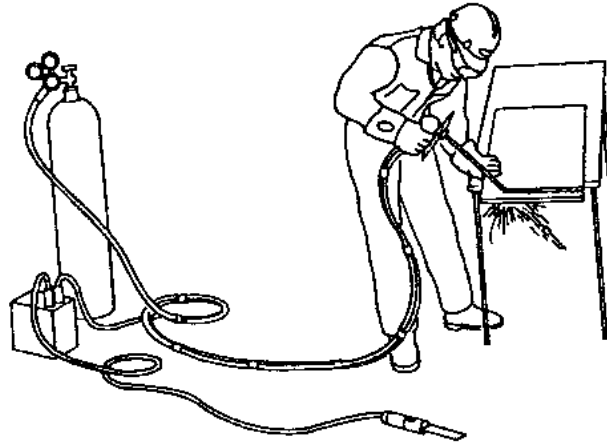
- 1 torch
- 20' (6 m) of oxygen hose
- 1 copper striker plate and 20' (6 m) of power cable
- 2 battery clamps
- 1 leather shield pad
- 4 adaptable collet nuts according to the diameter of the electrode (3/16'', 1/4'', 3/8'' and 1/2'')
- 1 carrying case
- 1 pair of welding gloves
- 1 pair of cutting goggles
- 2 packages of ultrathermic electrodes
- 1 operating instructions manual

N.B. : A 36'' (91.5 cm) extender accessory enables the operator to reach otherwise inaccessible locations is available in option.

SETUP

The figure below shows the setup of the *Prime Cut* ultrathermic cutting system. In addition to the *Prime Cut* kit, the only equipment necessary for using *Prime Cut* are :

- 1 oxygen regulator
- 1 bottle of oxygen
- 1 battery of 6, 12 or 24 volts



Moreover, instead of using a battery, the *Prime Cut* system can also be connected to a welding machine. The welding machine is used only for ignition of the system. The torch is connected at the positive terminal of the machine and the copper striker plate is connected at the negative terminal. The welding machine is set at low amperage (50 amps.) by using an AC or DC current (DC preferred).

Number 5 burning lens is necessary for the protection of the eyes when this process is used.

CHARACTERISTICS

- **Easy to operate, safe and multi-purpose system**
- Easy ignition with a 6, 12 or 24 volt battery
- No preheating or grinding required
- Electrodes can be **bent** for out-of-position repairing
- Flash arrestor in the torch for maximum protection
- No acetylene or other gases required (only oxygen)
- Adjustable oxygen pressure for small or large works
- 4 diameters (3/16", 1/4", 3/8" and 1/2") and 4 lengths (18", 36", 48", 60") of electrodes available :

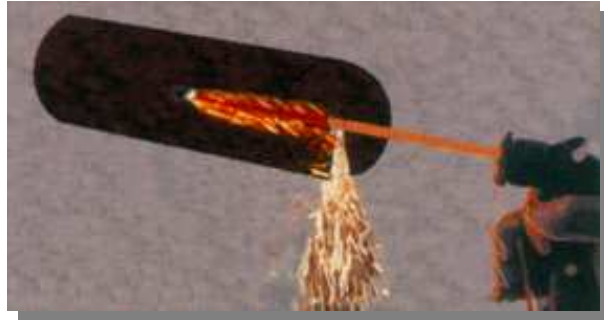


THE PROFESSIONAL'S CHOICE FOR GOUGING, PIERCING AND CUTTING

INDUSTRIAL APPLICATIONS

When saving time is the primary consideration, *Prime Cut* is the professional's first choice for applications involving specialty gouging, piercing or cutting.

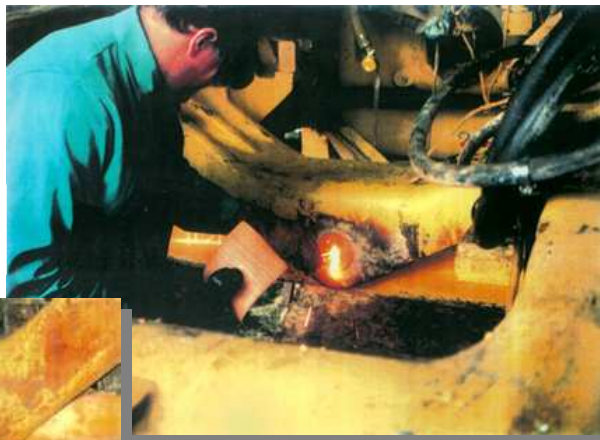
- **Pin piercing and removal**
- **Gouge welds or cracks**
- Airports
- Asphalt plants
- Building maintenance
- City departments
- Demolition
- Heavy equipment
- Railroads
- Road systems
- Quarries
- Welding shops
- Plant maintenance
- Construction
- Navy construction
- Emergency service
- Foundries
- Scrap yards



PIERCING TECHNIQUE

For pins piercing, cut a vent at the base of the hole, the hot magma can escape without generating excessive spatter.

To quickly and easily remove pins by piercing them with *Prime Cut* system.



For technical assistance or for ordering: